

# Overview of PA 08-98 CT Global Warming Solutions Act



“It used to be the news and the weather,  
now the weather is the news.”

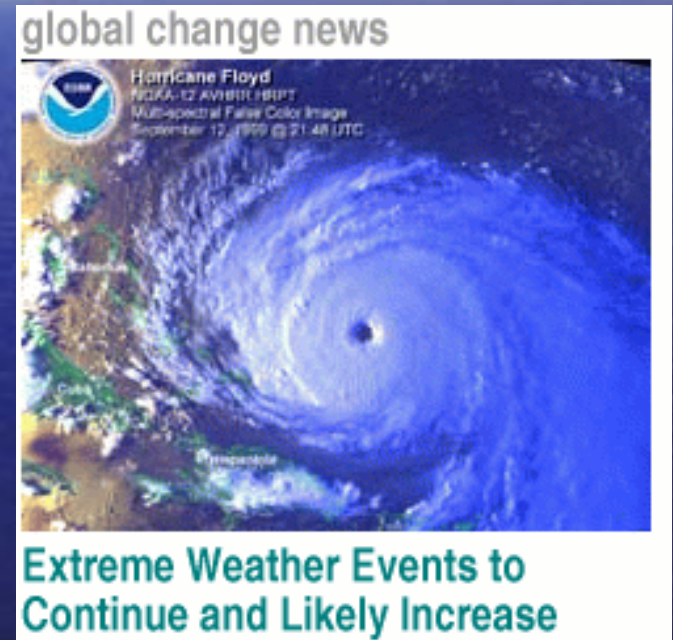
February 2007 -

Intergovernmental

Panel on Climate Change

consensus report concludes :

- It is very likely (i.e., 90%)  
that global warming is  
human caused.



# CT's Climate Framework



- Climate change does not belong to any single agency or governmental branch
- Governor's Steering Committee developed CT Climate Change Action Plan (CCAP) per P.A. 04-242
  - 55 economy-wide actions to reduce GHGs
  - 5 focus areas – generation; transportation/land use; agriculture, forestry and waste management; energy efficiency; and public education.
- P.A. 08-98 Connecticut Global Warming Solutions Act – maintains multi-agency roles & responsibilities around many new requirements

# Climate Change: Not Just An Environmental Issue

- Climate change is an energy issue with environmental and economic impacts
  - Direct stack controls/carbon sequestration not yet available/commercially viable
  - Short term efforts need to focus on energy efficiency
  - All energy users (i.e., all of us) must be part of the solution and help meet our GHG goals
  - GHG mitigation actions also must recognize current economic conditions

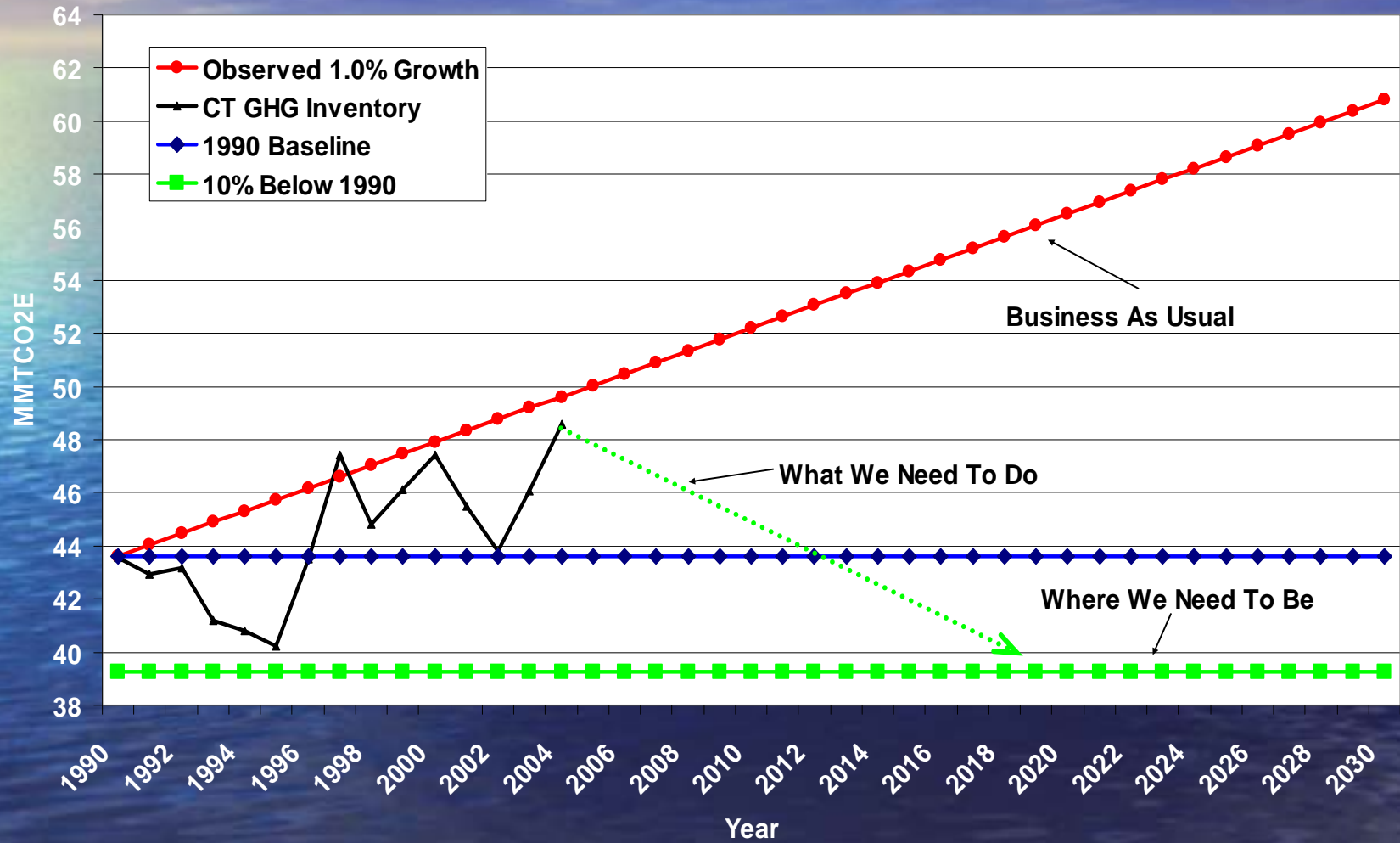
Segue to GWSA...



# PA 08-98 – A Framework

- The GHG emission reduction requirements are:
  - By January 2020, reduce Connecticut GHG emissions to 10% below 1990 levels and
  - By January 2050, reduce Connecticut GHG emissions to 80% below 2001 levels
  - DEP to determine these levels

# Connecticut GHG Emission Goals



# DEP's Requirements (CGS 22a-200b)

- By December 2009
  - Publish a 1990 and 2001 baseline inventory of CT GHG emissions,
  - Publish a summary of GHG emission reduction strategies,
  - NESCAUM under contract for this effort
- By July 2010
  - Conduct and publish modeling of GHG reduction scenarios and evaluate economic and environmental benefits and opportunities

# DEP's Requirements cont'd

- By July 2011
  - Analyze GHG emission reduction strategies ,
  - Recommend strategies to achieve required reductions after opportunity for public comment ; and
- By July 2012 and every 3 yrs after
  - Develop a schedule of recommended regulatory actions by relevant agencies after opportunity for public comment, and
  - Must show “reasonable further progress”

# Other Requirements

- DEP to monitor LCFS development
  - Evaluate potential of LCFS to achieve net carbon reductions in CT
- DOT (w/in available approps) to:
  - Investigate potential improvements to state's transportation system that will reduce GHG emissions,
  - Coordinate with NE states on regional strategies to incorporate GHG emission reductions into regional transportation planning

# Other requirements cont'd

- By Jan 1, 2010 – GSC agencies must report to OPM & DEP existing and proposed activities to meet state energy saving goals
- Report to updated biannually
- DEP & OPM to report to General Assembly's ENV, E&T and TRA committees on any federal cap & trade program 1 yr prior to effective date

# Mitigation vs. Adaptation

- “Mitigation” – reducing GHG emissions from new and existing sources
  - GHG levels are 3x what they were in the pre-industrial revolution era and have been increasing at the rate of 1-3% per year.
  - We are consigned to suffer, to some degree, from the affects of climate change over the next 50 – 100 years.
- PA 08-98 identified and corrected this policy gap
- DEP and other GSC agencies must identify and address how to deal with the foreseeable implications of climate change.
- This effort is summed up by the term “adaptation.”

- *Adaptation* is the adjustment in natural or human systems in response to actual or expected climatic stimuli or their effects, which moderates harm or exploits beneficial opportunities. *(Climate Change 2007 – Impacts, Adaptation and Vulnerability Contribution of Working Group II to the Fourth Assessment Report of the IPCC)*

# The Adaptation Subcommittee

- Under PA 08-98, an Adaptation Subcommittee of the GSC is formed and directed to:
  - Assess the impacts of climate change on state and local infrastructure, public health, natural resources and habitats in Connecticut;
  - Develop recommendations and plans that, if adopted, would enable state and local government to adapt to such impacts;
  - Provide technical assistance to implement such recommendations and plans;
  - Chaired by Dep Com Amey Marrella and Lise Hanners, State Director for TNC

# Adaptation Workgroups

- GSC Adaptation Subcommittee's 4 work groups:
  - Public health Workgroup chairs:
    - Dr Dennis McBride, Milford Health Director
    - Pamela Kilbey-Fox, DPH
  - Infrastructure Workgroup Chairs:
    - Paul Stacey, DEP – Water Protection and Land Reuse
    - Denise Savageau, Greenwich Conservation Commission

# Adaptation Workgroups cont'd

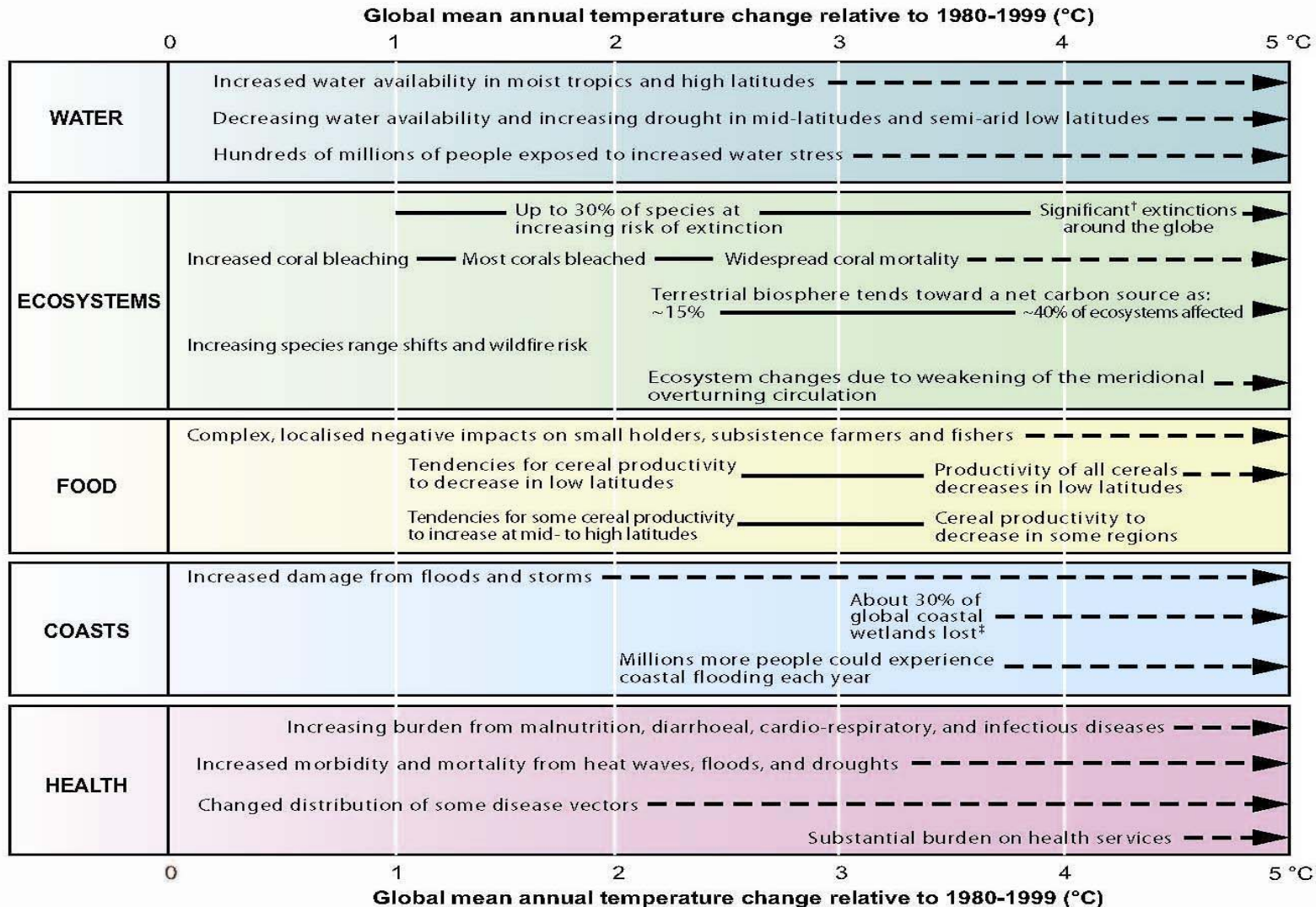
- GSC Adaptation Subcommittee's 4 work groups:
  - Agriculture Workgroup Chairs:
    - Dept. of Ag Commissioner F. Philip Prelli
    - Steve Reviczky, CT Farm Bureau
  - Natural Resources/Habitats Chairs:
    - Bill Hyatt, DEP - Fisheries
    - Adam Welchel, TNC
- Contact workgroup chairs to participate or follow along at:
  - <http://www.ctclimatechange.com/Adaptation.html>

# Adaptation subcommittee cont'd

- By December 2009
  - Report to the GSC on its assessment of current state and private programs and research concerning the projected impact of climate change on Connecticut's infrastructure, natural resources and habitats, public health and agriculture; and
- By July 2010
  - Report to General Assembly concerning recommendations for changes to existing state and municipal programs, laws or regulations to enable municipalities and natural habitats to adapt to harmful climate change impacts.

## Key impacts as a function of increasing global average temperature change

(Impacts will vary by extent of adaptation, rate of temperature change, and socio-economic pathway)



# A long road ahead. . .

- Implementing PA 08-98 will be a complex process
  - Multiple state agencies to coordinate actions, reduce GHG emissions, and fulfill their respective missions
  - Meeting long term GHG reduction goals will require significant changes in society
  - Efforts must come together in challenging economic times and an evolving federal regulatory and legislative landscape.